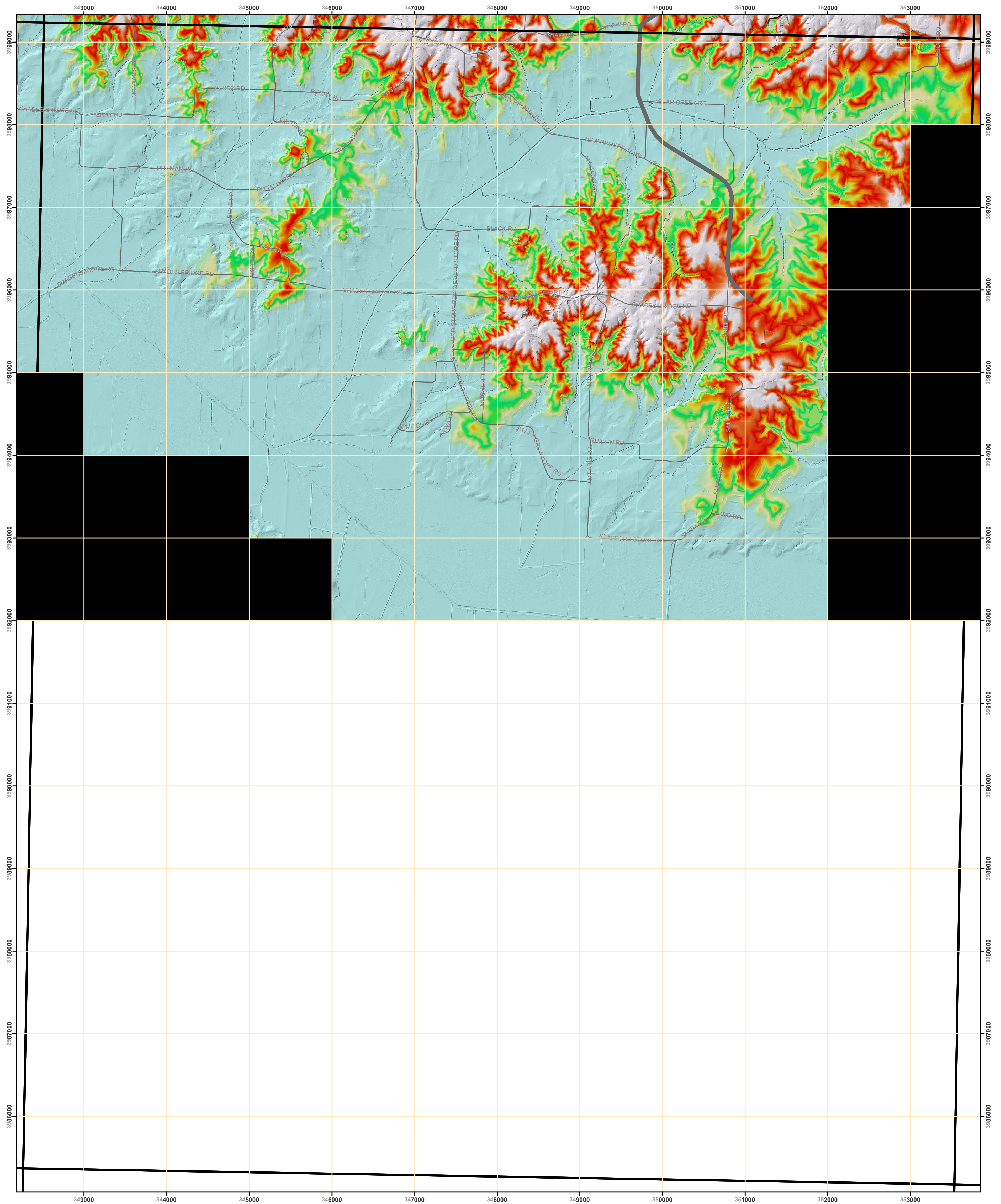


Weakley County 2012 Lidar Digital Elevation Model

Weakley County 9-1-1 &
Emergency Management Agency

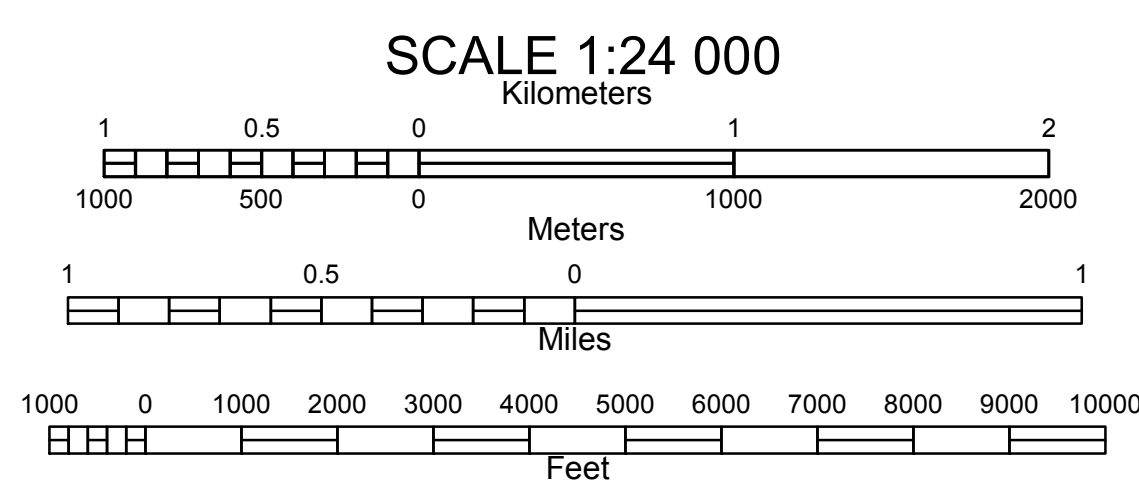
Referenced to USGS Topo:
Trezevant West Quadrangle
Tennessee 7.5 Minute Series



Produced by Weakley County GIS Specialist:
Coordinate System: NAD 1983 NSRS2007 UTM Zone 16N
Projection: Transverse Mercator
Datum: NAD 1983 NSRS2007
1,000-meter grid: Universal Transverse Mercator, Zone 16S

DEM.....Atlantic Group, Flown 2012
Roads.....Weakley County GIS 2016
Boundaries.....TIPS 2016

U.S. National Grid 100,000- m Square ID
CE
Grid Zone Designation 16S



Quadrangle Location

Greenfield	Pillowville	McKenzie
Bradford	Trezevant West	Trezevant East
Milan	Atwood	McLemoresville

Adjoining 7.5' Quadrangles

**TREZEVANT WEST, TN
2013**